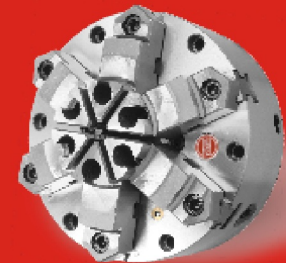


# FUERDA EA Series Semi-Steel Body Adjustable Scroll Chucks

EA Series Semi-Steel Adjustable Scroll Chucks can be used for all machining operations where universal chucks are used, along with applications where universal scroll chucks are unsuitable. Chucks come with American Standard two-piece tongue and groove jaws, semi-steel body, hardened scroll, hardened pinion.



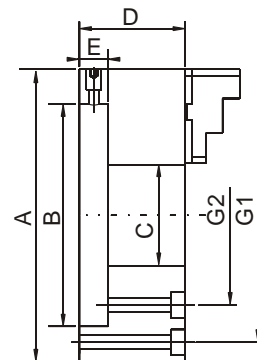
## EA Series Semi-Steel Body Adjustable Scroll Chucks

3-Jaw & 6-Jaw  
With Fine Adjustment, 0.0005" T.I.R.

2-Piece American standard Reversible Jaws  
Plain Back, Semi-Steel Body  
Utilizes the same mounting plate as the  
American Standard other popular adjustable  
scroll chucks

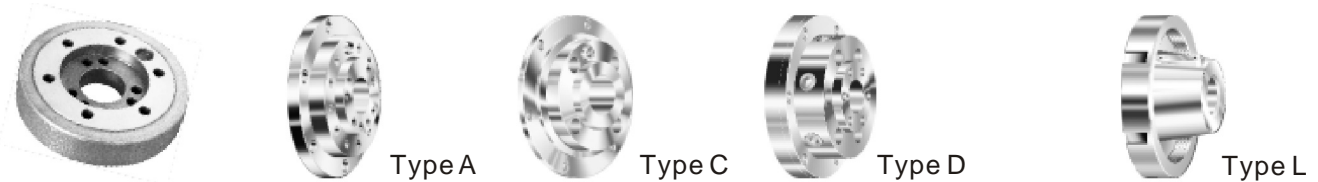
### Each chuck is provided with:

- 1 set of hard master jaws
- 1 set of hard top reversible jaws
- 1 chuck wrench
- 1 set of mounting screws
- 2 hex key
- semi-steel body
- 1 pinion design



| Chuck Size | A    | B      | C     | D    | E    | G1   | G2   | Qty of bolts | G1,G2 Thread | 3 Jaw    |            | 6 Jaw    |            |
|------------|------|--------|-------|------|------|------|------|--------------|--------------|----------|------------|----------|------------|
|            |      |        |       |      |      |      |      |              |              | Model    | Part No .  | Model    | Part No .  |
| 5"         | 5.0  | 2.375  | 1.230 | 2.20 | 0.66 | 4.44 | -    | 3            | 1/4"-20      | EA3-5"A  | 1-901-0500 | EA6-5"A  | 1-903-0500 |
| 6"         | 6.0  | 3.125  | 1.540 | 2.35 | 0.69 | 5.34 | -    | 6            | 1/4"-20      | EA3-6"A  | 1-901-0600 | EA6-6"A  | 1-903-0600 |
| 8"         | 8.25 | 4.750  | 2.346 | 3.15 | 0.75 | 7.50 | -    | 6            | 3/8"-16      | EA3-8"A  | 1-901-0800 | EA6-8"A  | 1-903-0800 |
| 10"        | 10.0 | 6.375  | 2.860 | 3.40 | 0.81 | -    | 4.38 | 6            | 7/16"-14     | EA3-10"A | 1-901-1000 | EA6-10"A | 1-903-1000 |
| 12"        | 12.0 | 7.906  | 3.285 | 4.00 | 0.84 | -    | 5.25 | 6            | 1/2"-13      | EA3-12"A | 1-901-1200 | EA6-12"A | 1-903-1200 |
| 15"        | 15.0 | 11.781 | 4.250 | 5.78 | 1.13 | -    | 6.75 | 6            | 5/8"-11      | EA3-15"A | 1-901-1500 | EA6-15"A | 1-903-1500 |

## FLE Series Semi-Steel Adapter Fully Machined for EA Series Chuck



| Chuck Dia. | Taper No . | Typt (A1,A2) Part No . | Type C (Part No .) | Type D(Part No .) | Taper No . | Type L(Part No .) |
|------------|------------|------------------------|--------------------|-------------------|------------|-------------------|
| 5"         | 3          | --                     | FLE-125/C3         | FLE-125/D3        | -          | -                 |
| 5"         | 4          | --                     | FLE-125/C4         | FLE-125/D4        | -          | -                 |
| 6"         | 3          | --                     | FLE-160/C3         | FLE-160/D3        | -          | -                 |
| 6"         | 4          | --                     | FLE-160/C4         | FLE-160/D4        | L00        | FLE-160/L00       |
| 6"         | 5          | FLE-160/A5             | FLE-160/C5         | FLE-160/D5        | L0         | FLE-160/L0        |
| 8"         | 4          | FLE-200/A4             | FLE-200/C4         | FLE-200/D4        | L00        | FLE-200/L00       |
| 8"         | 5          | FLE-200/A5             | FLE-200/C5         | FLE-200/D5        | L0         | FLE-200/L0        |
| 8"         | 6          | FLE-200/A6             | FLE-200/C6         | FLE-200/D6        | L1         | FLE-200/L1        |
| 10"        | 5          | FLE-250/A5             | FLE-250/C5         | FLE-250/D5        | L00        | FLE-250/L00       |
| 10"        | 6          | FLE-250/A6             | FLE-250/C6         | FLE-250/D6        | L0         | FLE-250/L0        |
| 10"        | 8          | FLE-250/A8             | FLE-250/C8         | FLE-250/D8        | L1         | FLE-250/L1        |
| 12"        | 6          | FLE-315/A6             | FLE-315/C6         | FLE-315/D6        | L0         | FLE-315/L0        |
| 12"        | 8          | FLE-315/A8             | FLE-315/C8         | FLE-315/D8        | L1         | FLE-315/L1        |
| 12"        | 11         | FLE-315/A11            | FLE-315/C11        | FLE-315/D11       | L2         | FLE-315/L2        |
| 15"        | 6          | FLE-400/A6             | FLE-400/C6         | FLE-400/D6        | L1         | FLE-400/L1        |
| 15"        | 8          | FLE-400/A8             | FLE-400/C8         | FLE-400/D8        | L2         | FLE-400/L2        |
| 15"        | 11         | FLE-400/A11            | FLE-400/C11        | FLE-400/D11       | L3         | FLE-400/L3        |



| Part No .  | Hard Top Jaws |            | Hard Master Jaws |            | Soft Top Jaws |             |
|------------|---------------|------------|------------------|------------|---------------|-------------|
|            | 3-Jaw         | 6-Jaw      | 3-Jaw            | 6-Jaw      | 3-Jaw         | 6-Jaw       |
| Chuck Dia. |               |            |                  |            |               |             |
| 5"         | TJ-EA3-125    | TJ-EA6-125 | MJ-EA3-125       | MJ-EA6-125 | STJ-EA3-125   | STJ-EA6-125 |
| 6"         | TJ-EA3-160    | TJ-EA6-160 | MJ-EA3-160       | MJ-EA6-160 | STJ-EA3-160   | STJ-EA6-160 |
| 8"         | TJ-EA3-200    | TJ-EA6-200 | MJ-EA3-200       | MJ-EA6-200 | STJ-EA3-200   | STJ-EA6-200 |
| 10"        | TJ-EA3-250    | TJ-EA6-250 | MJ-EA3-250       | MJ-EA6-250 | STJ-EA3-250   | STJ-EA6-250 |
| 12"        | TJ-EA3-315    | TJ-EA6-315 | MJ-EA3-315       | MJ-EA6-315 | STJ-EA3-315   | STJ-EA6-315 |
| 15"        | TJ-EA3-400    | TJ-EA6-400 | MJ-EA3-400       | MJ-EA6-400 | STJ-EA3-400   | STJ-EA6-400 |



| Part No .  | Scroll   | Pinion   | Wrench  | Pinion Screw | Fine Adjustment Screws |
|------------|----------|----------|---------|--------------|------------------------|
| Chuck Dia. |          |          |         |              |                        |
| 5"         | SC-E-125 | PI-E-125 | W-E-125 | PH-E-125     | FS-E-125               |
| 6"         | SC-E-160 | PI-E-160 | W-E-160 | PH-E-160     | FS-E-160               |
| 8"         | SC-E-200 | PI-E-200 | W-E-200 | PH-E-200     | FS-E-200               |
| 10"        | SC-E-250 | PI-E-250 | W-E-250 | PH-E-250     | FS-E-250               |
| 12"        | SC-E-315 | PI-E-315 | W-E-315 | PH-E-315     | FS-E-315               |
| 15"        | SC-E-400 | PI-E-400 | W-E-400 | PH-E-400     | FS-E-400               |